

Antique/vein metallic finishes

Polyester-based antique/vein metallic **TIGER Drylac® Series 59** surface finishes are formulated with mica pigments and do not require a clear top coat for neither exterior nor interior applications.

Fine and rough textured

Polyester-based fine and rough textured **TIGER Drylac® Series 39** and **Series 49** surface finishes with gloss levels ranging from matte to high gloss are ideal for automobile underbody and marine environments where high chip resistance may be required. To ensure adequate corrosion protection in the valleys of the textures, it is essential to follow the minimum film thickness recommendations (check pertinent Product Data Sheets).

Wrinkle finishes

Polyester-based **TIGER Drylac®** wrinkle surface finishes provide an attractive solution to electronic cabinets, metal cabinets, light fixtures, automotive accessories and other applications where the concealment of metal imperfections is required.

Industrial warehouse racking systems

Polyester-based **TIGER Drylac®** surface finishes in **Series 49** are formulated in sector-specific yellow, orange and red colors to provide an economical solution for industrial warehouse racking systems. They exhibit limited UV stability.

Polyester urethanes

Polyurethane-based **TIGER Drylac® Series 44** surface finishes are available in a variety of colors, gloss levels and finishes such as matte, semigloss, glossy, clear, textured and metallic. They can be formulated-to-order in any color.

Clear surface finishes

Polyester, polyester super durable, polyurethane and acrylic-based **TIGER Drylac®** clear surface finishes are available in a variety of gloss levels from matte to high gloss. New fine texture matte and rough texture glossy clear finishes in **TIGER Drylac® Series 49** are well suited to hide substrate imperfections. They can be used as a single coat directly over the substrate or as a topcoat over any other base color. However, due to the textured finish the base color will experience some appearance changes in color and gloss. It is recommended to run trials prior to specifying or running the powder coating job.

Powder matting agents

Polyurethane-based powder matting agents are suitable for post addition to smooth-flow surface finishes. A continuous matting from 30-60 gloss (gloss level according to ASTM 523 at 60° angle) can be achieved. They are suitable for all **TIGER Drylac®** interior application products. They are suitable for exterior applications only in conjunction with **TIGER Drylac® Series 39, Series 49** and **Series 59**. They are unsuitable for façade/architectural applications.

Epo-Strong

Epoxy-based two-component conductive putty is suitable for minor scratch and defect repairs on substrate surfaces. They can resist temperatures of up to 392 °F (200 °C). They can be top-coated with **TIGER Drylac®** surface finishes. They are suitable for interior and most exterior applications. They are unsuitable for façade/architectural applications or corrosion protection.

Surface finishes exhibited in this color chart include:

interior applications	Epoxy/polyester (hybrid)	Series 09
	Epoxy	Series 69
	Polyester/acrylic (hybrid)	Series 16
interior and exterior (non-architectural) applications	Polyester urethane	Series 44
	Polyester TGIC	Series 39
		Series 49
		Series 418
	Polyester TGIC-free	Series 59
exterior (architectural) applications	Polyester TGIC super durable	Series 38
exterior (automotive) applications	Polyester TGIC	Series 223

TIGER WORLDWIDE NETWORK



999410510917

contact details available at
tiger-coatings.com



Copyright cover image: 1 Rotalliana Italy



Essentials

Exterior and interior industrial applications | Volume 4



Powder coatings for exterior and interior industrial applications

This color chart features a wide selection of stock surface finishes intended for industrial applications such as residential window and door frames, lawn mowers, garden equipment, patio furniture, fences, electrical boxes, light fixtures, automotive accessories, bicycles, motorcycles, agricultural equipment and machinery, sporting goods as well as other industrial applications.

It includes a wide selection of black and white colors. Colors not displayed in this color chart might appear in another **TIGER Drylac®** color chart or can be formulated-to-order.

Colors shown in this color chart are suitable for exterior and interior applications. An exception to this are colors formulated in **TIGER Drylac® Series 69**, which are intended for interior applications only.



TIGER Drylac® non-metallic standard and custom-colors in **Series 39** and **Series 49**; made in the USA, Canada and Mexico, are periodically re-certified and carry the (Underwriters Laboratories) Recognized Component Mark (Spec DTOV2.MH16276 and Spec DTOV2.MH27573).

Bengal color selection

Polyester-based **TIGER Drylac® Series 49** Bengal color selection offers exceptional flow properties in high gloss level.

SealKor product line

Polyester-based **TIGER Drylac® SealKor** surface finishes in **Series 418** and **Series 59** are weather-resistant powder coatings compliant with AAMA 2603 specifications, providing high corrosion protection and moisture barrier properties. They are recommended as one-coat solution to conventional two-coat systems (primer + top coat) or as an alternative to epoxy-based zinc-rich and zinc-free primers. **TIGER Drylac® SealKor** powder coatings in **Series 223** are formulated for automotive applications. **TIGER Drylac® SealKor** surface finishes can be formulated-to-order in any color.

ASA/ANSI colors

Polyester-based ASA colors; also referred to as ANSI colors, are available in various shades of industrial gray in **TIGER Drylac® Series 39** and **Series 49**. They are suitable for industrial machinery and other applications where neutral gray colors are required.

Anti-graffiti properties

Polyurethane-based anti-graffiti **TIGER Drylac®** surface finishes provide excellent chemical resistance and surface hardness properties. Anti-graffiti clear powder coatings can be applied as top coat over any **TIGER Drylac®** powder coating to obtain a tough easy-to-clean surface.

Anti-skid properties

Polyester-based **TIGER Drylac®** surface finishes with anti-slip properties are ideal for metal staircases, metal decking, safety gratings, floor plates and grids, maintenance catwalks, elevator floors, conveyors and additional industrial applications that require an anti-slip coating for safety purposes. It is recommended to apply over a primer or a semigloss basecoat.

High-reflectivity properties

Polyester-based **TIGER Drylac®** surface finishes formulated with high reflectivity for lighting applications strike a perfect balance between smoothness and hiding power.

Outgassing forgiving (OGF) properties

TIGER Drylac® surface finishes with OGF properties are developed for castings, hot galvanized and forged steel, aluminum flame-sprayed and other porous and outgassing-prone substrates such as fired clay and ceramics. They are available in a variety of colors shown in this color chart and can also be formulated in custom-colors. **TIGER** also offers OGF additives that can be dry-blended to any **TIGER Drylac®** powder coating. However, for large volumes, it is recommended to produce the powder coating in an OGF formulation on a custom-basis.





bengal | 49/01234 ❖ Bengal Clear Glossy
bengal | 49/66666 Bengal Yellow | gloss level 9545
bengal | 49/77777 Bengal Light Grey | gloss level 9545
bengal | 49/44444 Bengal Blue | gloss level 9545



bengal | 49/11111 Bengal White | gloss level 9545
bengal | 49/22222 Bengal Orange | gloss level 9545
bengal | 49/70158 Bengal Dark Grey | gloss level 9545
bengal | 49/55555 Bengal Green | gloss level 9545



bengal | 49/10388 Bengal Cream | gloss level 9545
bengal | 49/33333 Bengal Red | gloss level 9045
bengal | 49/99999 *** Bengal Silver
bengal | 49/88888 Bengal Black | gloss level 9545



glossy | 39/10010 Sky White | gloss level 9045
glossy | 39/10160 Horizon White | gloss level 9045
glossy | 39/10200 Appliance White | gloss level 9045
glossy | 39/10210 Apollo White | gloss level 9045



glossy | 44/10008 Anti-Graffiti White | gloss level 9045
glossy | 49/10316 Steel Rack White | gloss level 9045
glossy | 49/10410 High-Reflective White | gloss level 90+
glossy | 49/11421 WW White | gloss level 8545



glossy | 39/60010 Chocolate Brown | gloss level 8045
glossy | 39/80010 Gloss Black | gloss level 8545
glossy | 49/80036 Wet Black | gloss level 9545
glossy | 418/80020 FC Black Mar Resistant | gloss level 55-65



matte | 49/81210 Alaska Black Matte | gloss level 2545
semigloss | 49/81231 Alaska Medium Black | gloss level 6045
glossy | 49/13720 Alaska Bianco | gloss level 80-95
glossy | 49/80600 Alaska Black Glossy | gloss level 80-95

* To increase durability and chemical resistance, TIGER Drylac® recommends the application of a clear top coat for interior and exterior applications. | *** Due to semi transparency of the product, the opacity of the color and finish will depend upon the substrate type and the film thickness. A film below 2.8 mils will exhibit limited hiding.



flat matte interior | 69/80291 NEW Black | gloss level 343
flat matte | 44/80060 Solar Black Flat Matte | gloss level 643
flat matte | 44/80066 Black Magic Flat Matte | gloss level 643
flat matte | 44/90053 Millennium Black Flat Matte | gloss level 845



matte | 49/10103 White Matte RAL 9010 | gloss level 2045
matte | 49/11350 White Matte | gloss level 2045
matte | 39/80020 Black Matte | gloss level 2045
matte | 39/60060 Roman Bronze Matte | gloss level 2045



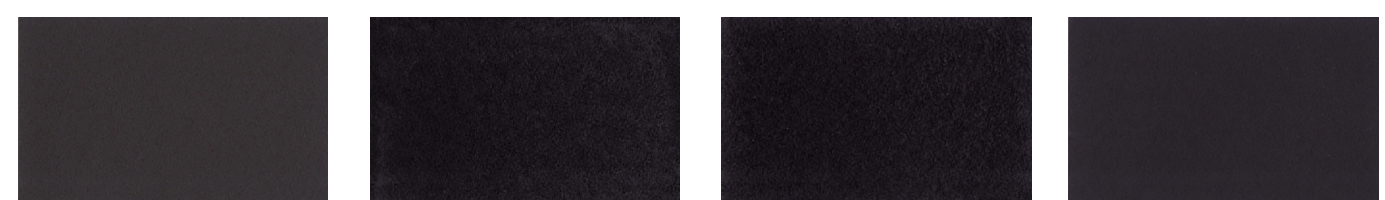
matte | 49/80350 Black Matte RAL 9005 | gloss level 2047
matte | 44/90052 Millennium Black Matte | gloss level 20-30
semi matte | 49/81430 Black Semi Matte | gloss level 4045
semi matte | 39/10040 White Semi Matte | gloss level 4045



semigloss | 49/80033 PacCar Black Semigloss | gloss level 5545
semigloss | 39/80040 Black Semigloss | gloss level 6045
semigloss | 49/62070 Rail Bronze | gloss level 6045
semigloss | 49/13370 Off White | gloss level 6045



smooth texture interior | 69/80143 Midnight Black Epoxy Wrinkle
fine texture matte | 39/80200 Black Fine Texture
fine texture matte | 39/80170 Black Wrinkle
fine texture matte | 49/13150 White Fine Texture



fine texture matte | 49/62721 Brown Fine Texture
fine texture matte | 49/80830 Black Matte Fine Texture
fine texture matte | 49/80521 Anti Skid Black
fine texture matte | 49/81241 Black Extra Fine Texture



rough texture matte | 49/81307 NEW Aprx to RAL 9005
rough texture glossy | 39/81420 NEW Aprx to RAL 9005
rough texture glossy | 49/80990 Aprx to RAL 9011 Graphite
rough texture glossy | 49/11570 RTG Nature White

exterior applications



clear | 16/00030 ❖ Clear Flat Matte
clear | 38/00088 ❖ Clear Matte SD
clear | 49/00280 ❖ Clear Semi Matte
clear | 44/00049 ❖ NEW Geronimo Satin



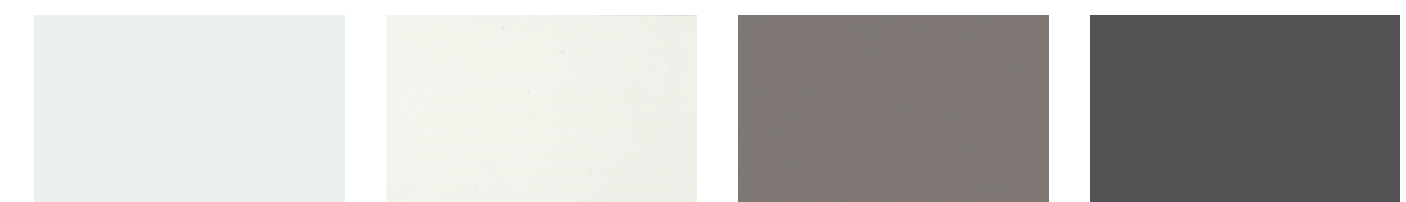
clear | 44/00018 ❖ Clear Anti-Graffiti Glossy
clear | 38/00001 ❖ Clear High Gloss SD
clear fine texture | 49/00260 ❖ NEW Clear Sandy FT
clear rough texture | 49/03002 ❖ NEW Clear Textured RT



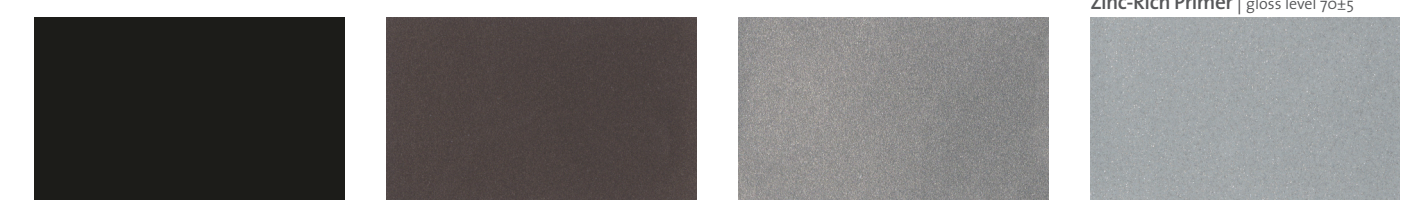
outgassing forgiving | 49/10870 White OGF | gloss level 7045
outgassing forgiving | 49/16130 Light Ivory OGF | gloss level 8045
outgassing forgiving | 49/51610 Moss Green OGF | gloss level 8045
outgassing forgiving | 49/70239 Fed Std Haze Grey OGF | gloss level 4045



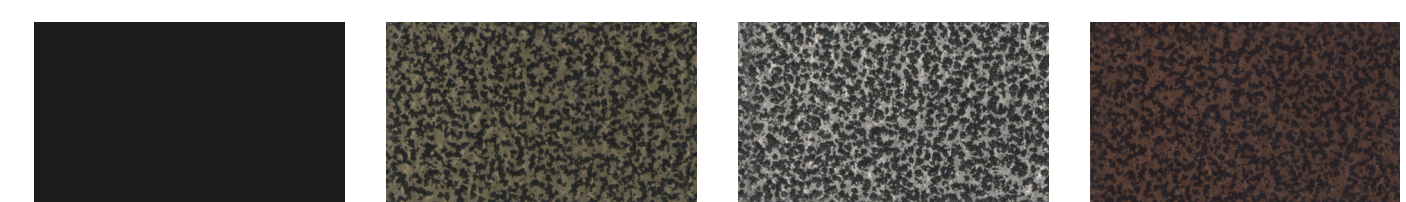
outgassing forgiving | 49/71800 Haze Grey OGF | gloss level 7545
outgassing forgiving | 49/80720 Black OGF | gloss level 7045
outgassing forgiving | 49/91312 Chrome OGF *|***
primer | 09/73841 OGF | gloss level 7045



glossy | 418/11244 Sealkor White | gloss level 8747
primer | 69/11001 NEW Dryprotector White | gloss level 543
primer | 69/70000 Dryprotector | gloss level 342
primer | 69/90500 (USA and Mexico) 69/90701 (Canada) Zinc-Rich Primer | gloss level 7045



semigloss | 223/80001 Sealkor Black | gloss level 6045
metallic | 39/60020 Bronze Matte
metallic | 49/93061 Stardust
metallic | 39/90000 Silver



high gloss | 223/80005 Sealkor Black | gloss level 95+
antique/vein metallic | 59/90050 Antique Bronze Metallic
antique/vein metallic | 59/90820 Antique Silver Metallic
antique/vein metallic | 59/90821 Antique Copper Metallic

❖ Clear coat swatch for indication only. It does not represent the actual clear powder coating. For an accurate assessment and to qualify the finish and shade, it is recommended to obtain a powder coated sample before specifying the product. | ▲ Exhibits limited UV stability.



glossy | 39/40010 Royal Blue | gloss level 8545
glossy | 39/30070 Snowmobile Purple | gloss level 9045
glossy | 39/15020 Almond | gloss level 9045
glossy | 39/15010 Beige | gloss level 9045



glossy | 39/20010 Safety Orange | gloss level 9045
glossy | 39/32920 Pumpkin Orange | gloss level 9045
glossy | 39/30100 Fire Engine Red | gloss level 8545
glossy | 39/30010 Ruby Red | gloss level 80-90



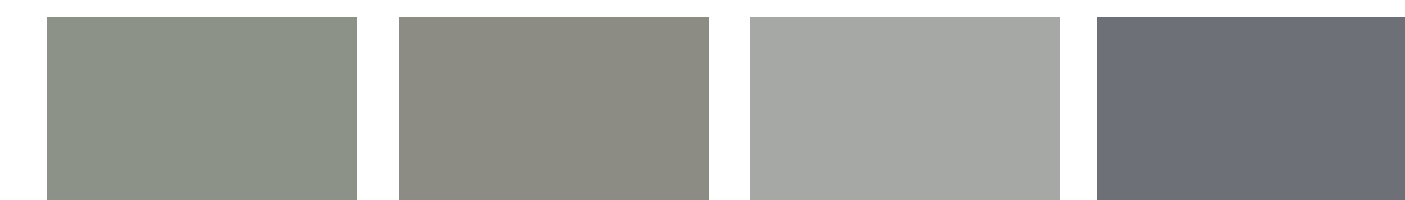
glossy | 39/50060 U.S. Green | gloss level 9045
glossy | 39/20130 Buttercup Yellow | gloss level 8545
glossy | 39/20020 Safety Yellow | gloss level 9045
glossy | 49/20855 CNH Bright Yellow | gloss level 8747



glossy | 49/19365 Tan | gloss level 8545
glossy | 49/25001 ▲ Steel Rack Orange | gloss level 9045
glossy | 49/30052 ▲ Steel Rack Red | gloss level 9045
glossy | 49/20047 ▲ Steel Rack Yellow | gloss level 9045



ASA | 549/70022 ANSI 61
glossy | 59/51648 SD Deer Green | gloss level 8545
glossy | 59/20360 New Cat Yellow | gloss level 8045
glossy | 59/21157 SD Deer Yellow | gloss level 8545



ASA | 49/70082 ASA-61 Semigloss | gloss level 6045
ASA | 39/70020 ASA-61 | gloss level 8045
ASA | 39/70010 ASA-70 | gloss level 8545
ASA | 39/70200 ASA-49 | gloss level 8045

Disclaimer
Color swatches featured in this color chart have been matched to color standards at a 60-degree visual angle under a D65 Daylight primary source. Gloss level on metallic, fine and rough textured swatches cannot be accurately measured. The swatches are to be considered as an indication only. In practice, discrepancy between the color swatch and the actual powder coating may arise. This is due to paper and ink limitations, the influence of light and heat during the color chart production, as well as gloss level, substrate, surface variations, binder systems and pigments, coating thickness and cure oven conditions used during application.

For an accurate color and finish assessment, it is recommended to obtain a powder coated sample panel from TIGER Drylac®.

